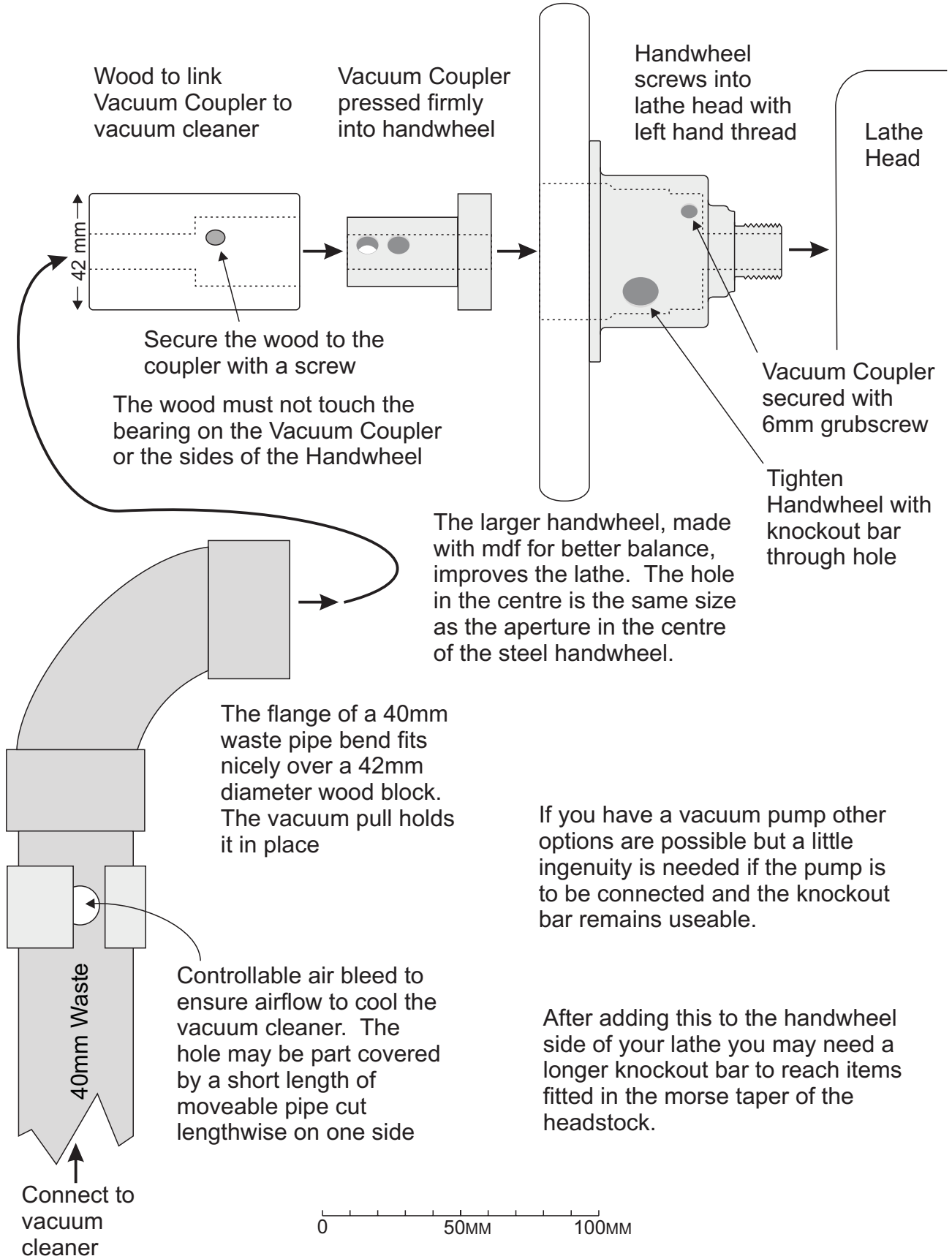




VACUUM COUPLER

This is for the coupler that fits between a vacuum cleaner and the Teknatool Nova handwheel as fitted to most recent Nova full size lathes.



If you have a vacuum pump other options are possible but a little ingenuity is needed if the pump is to be connected and the knockout bar remains useable.

After adding this to the handwheel side of your lathe you may need a longer knockout bar to reach items fitted in the morse taper of the headstock.