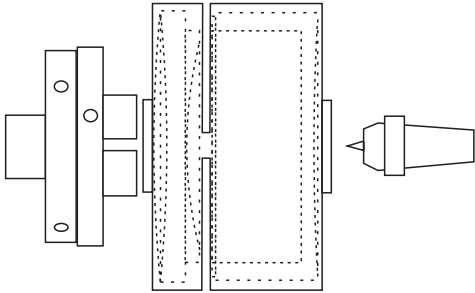


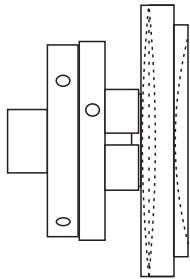
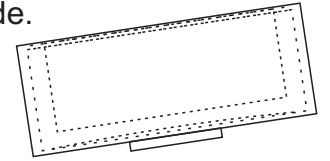
SIMPLE BOX

This is a box without any decorations or fancy shapes. You can make it whatever size you wish. To make it the correct size for Butterfly in the Beads of Courage Programme check out the Butterfly Box 1 Project sheet.

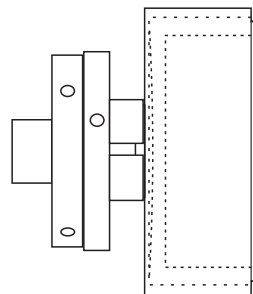
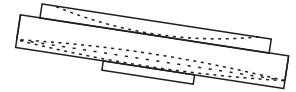


Mount the chosen wood between centres. Round it off and make a chuck bite spigot on both sides. Mount this in a chuck by the side planned to be the top of the box.

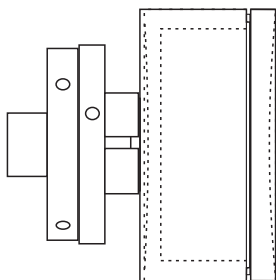
The plan is to complete the outside of the bottom of the box later, so just part the two halves of the box. Set the bottom part of the box aside.



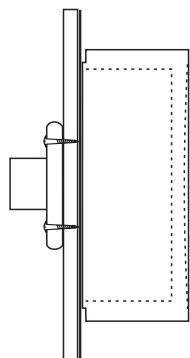
Cut the diameter of the lid down to exact size. Cut the rebate required to fit the lid to the bottom. The underside of the lid may remain flat or be slightly concave. Sand and finish all the underside of the lid. Take the lid off the chuck and set it aside.



Re-mount the bottom half of the box. Cut the top surface to the finished dimension and begin hollowing the box. Hollow it enough to use it as a jam chuck to remount the box top.



Fit the box top onto the box bottom. Complete the outside of the top. This may be flat or with a little concave or convex shape. Cut the sides of the box down to the exact width of the top. Sand and finish the top and sides. Remove the top and complete the hollowing of the bottom. Sand and finish the inside.



Re-mount the bottom by its upper side on a jam chuck, press-fit faceplate, vacuum chuck, or other device. Remove the spigot and cut the bottom to a slight concave. Sand and finish.

