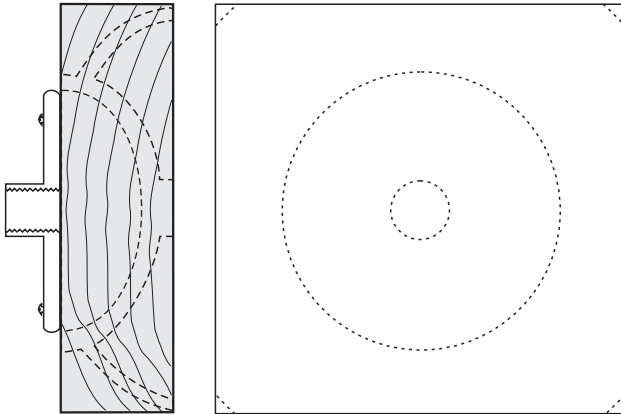
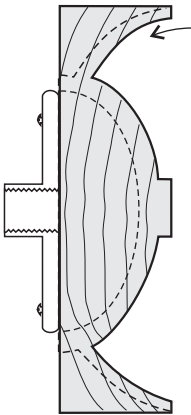




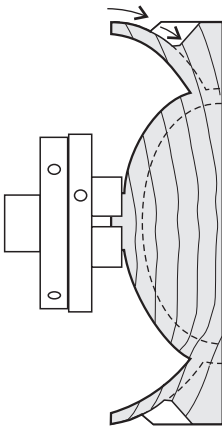
## A SQUARE BOWL



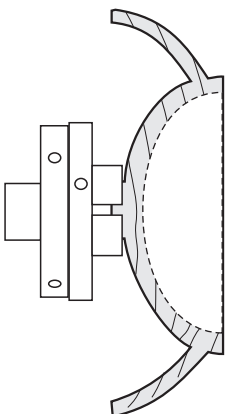
Cut the wood perfectly square and dress the four narrow sides.  
Mount perfectly central on a faceplate.  
Plan the shape of the bowl carefully bearing in mind the steps needed to clean off the foot later.



Start the cuts at the corners with care to avoid breaking off the entire corner.  
Cut the complete underside of the bowl and the spigot for reversing the bowl into a chuck.  
Sand and finish all the underside except the spigot.



Turn the wood over and mount it in a chuck.  
Start turning the top side from the extremities of the wings by thinning down to the desired thickness bit by bit while leaving adequate support further in towards the bowl proper.



Complete the wings. Ensure that the line of curve of the bottom continues through to the rim of the bowl.  
Hollow the bowl.  
Sand and finish the top side.  
Turn it over and clean off the foot.