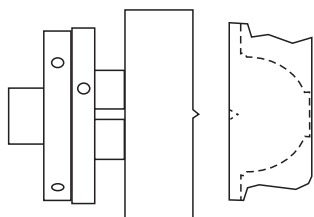
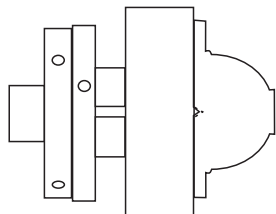


## DEER ANTLER BOX

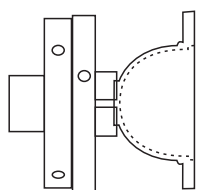


Sand flat the broad face of a deer antler button which is to be the bottom of the box. Drill a small dent at the centre point.

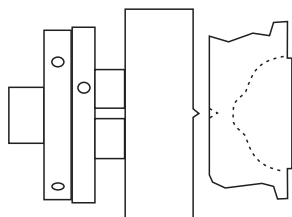
Face off a waste block attached to a faceplate or chuck. Leave a little nipple in the centre for the drilled dent to position the antler button correctly. Glue it on with hot melt glue.



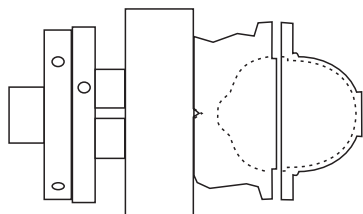
Turn the outside. Make the foot into a spigot for re-mounting on a small chuck.



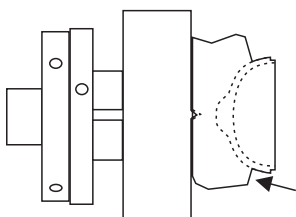
Remount in a small chuck and cut the inside, complete with a rebate for the lid to fit into. Finish this by sanding to a very fine grit with wet and dry paper lubricated with water. Apply a hard wax. Set this part aside.



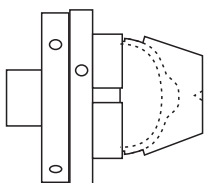
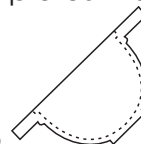
Mount the piece for the lid as you did for the bottom, but this time with the widest part away from the waste block.



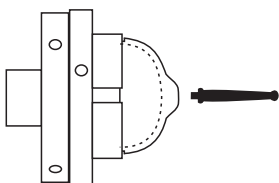
Cut the underside of the lid to the point where the rim and spigot that will fit into the rebate of the bottom are complete. Jam fit the bottom, tidy the foot, sand and finish the outside. This completes the bottom - set it aside.



Hollow, sand, and finish inside the lid. Also cut and finish a bit up the sides. Then part off as shown by the arrow.



Remount by the spigot in a chuck or make a jam chuck of hard material. Sand and finish the outside.



If a finial is to be added, cut the spigot of the finial with the finial wood mounted in another chuck. Cut a hole to fit the finial into the lid of the box and glue it in. Turn and finish the finial.  
The box is now complete.

