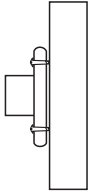
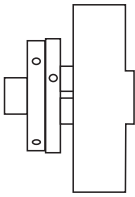


SEGMENTED BOWL

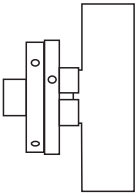
This plan is for a 150mm bowl with three layers of laminates between a solid rim at the top and a solid base. Details for creating each ring of laminates are in a separate sheet.



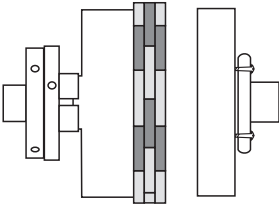
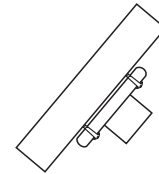
Mount the 160 x 160 x 20 wood that is to be the top ring of the bowl on a small faceplate. Turn it round and cut the face perfectly flat or with a central dish inside where this will be glued to the top segment ring. Keep it on that faceplate for later use.



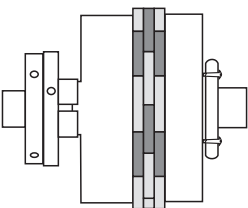
Mount the 150 x 150 x 50 wood that is to be the base of the bowl on a shallow screw chuck or drilled dovetail. Round it off. Turn a spigot on this and reverse mount it into a chuck.



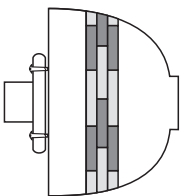
Clean the face to perfectly flat or with a central dish inside where the segment ring will be glued on.



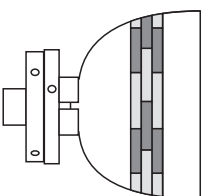
Glue on each ring of laminates. Use the faceplate with the top ring wood on it and the tailstock to hold each ring in place until the glue sets. After the glue is set sand (or cut if the surface is bad) the surface of each laminate ring to be perfectly flat.



Glue the top ring wood on it and use the tailstock to hold this wood in place until the glue sets. When the glue is set release the wood from the chuck (keep the faceplate on).



Remount it on the lathe using the faceplate screwed to the top ring wood. Turn the outside of the laminated bowl just as you would make a normal bowl. Sand it just as you would a normal bowl. You may then finish it completely or leave it a few weeks to allow the segments to settle before sanding it again and applying a finish.



Turn it over, remove the faceplate and mount it in a chuck to hollow the inside. Sand it just as you would a normal bowl. You may then finish it completely or leave it a few weeks to allow the segments to settle before sanding it again and applying a finish.