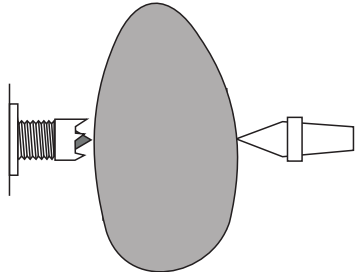
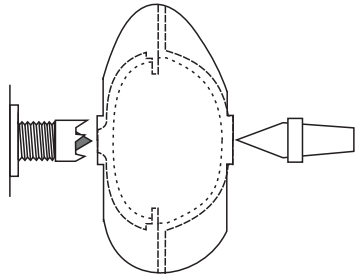


## TAGUA NUT BOX

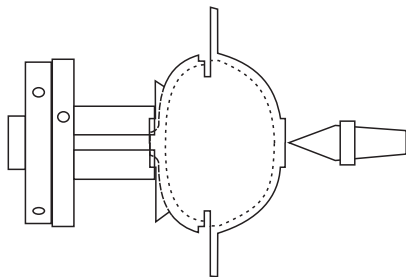
This project is shown using Teknatool pin jaws for the small chuck bite (12mm is ideal but up to 25mm) and Vermec 35mm jaws for the larger chuck bite (35mm is ideal but up to 45mm). It is important that you plan and cut carefully to suit the chucks or other holding methods that you wish to use.



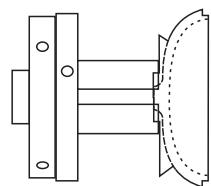
Choose a small drive spur and place the nut between centres. The narrowest dimension of the nut should be between the centres and thus the broad flatter faces of the nut towards the head and tail. Try to get it central laterally.



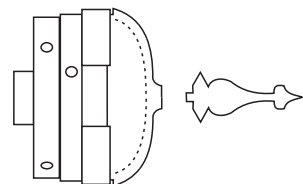
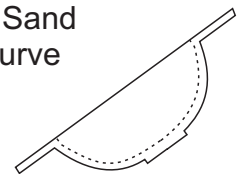
Cut a spigot at both the drive spur and tail. The spigot at the tail will be the foot of the finished box so be sure to get the size right.



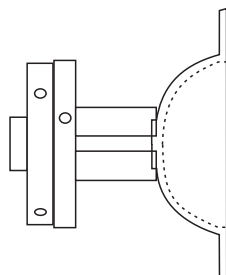
Mount the nut in a chuck holding the spigot on the planned lid of the box. Cut the upper face of the bottom part of the box first and continue this cut in so that it is the start of parting off the lid. Start the shape of the lid and then cut a small spigot to suit your 30mm chuck (or your chosen holding method). Shape the underside of the box ensuring that the curve of it matches the curve of the lid. Sand and finish the underside. Part the bottom off.



Set the bottom aside. Hollow the top. Sand and finish inside the lid and the outer curve that is already cut to shape.



Remount the box lid in your 30mm chuck (or your chosen holding method). Turn the outside of the lid. In another chuck make a finial and fit it to this lid.



Put the box bottom back in the chuck. Hollow it. Make sure that the width of the edge of the hollow is a nice fit for the lid. Sand and finish.

